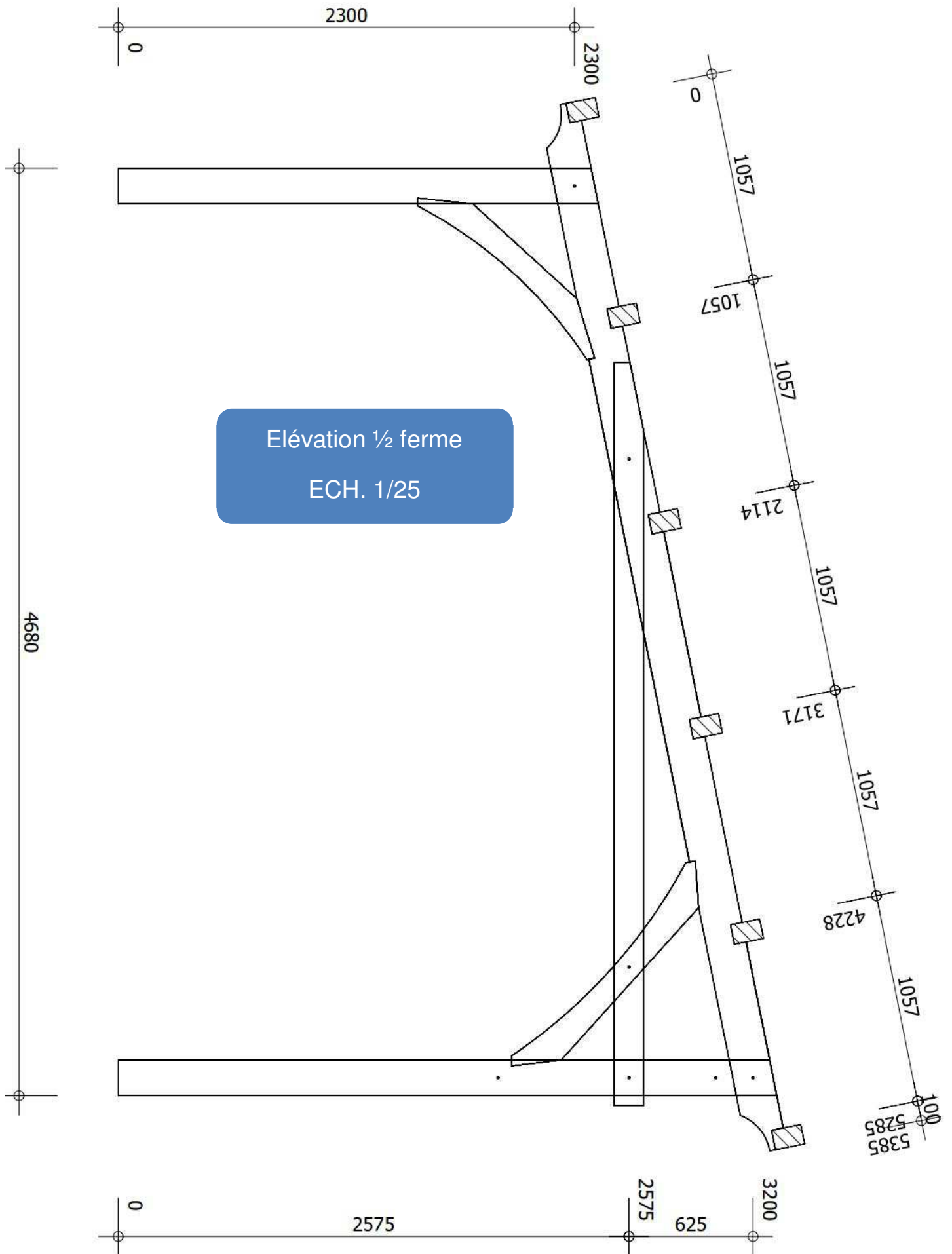


Perspective de l'ouvrage

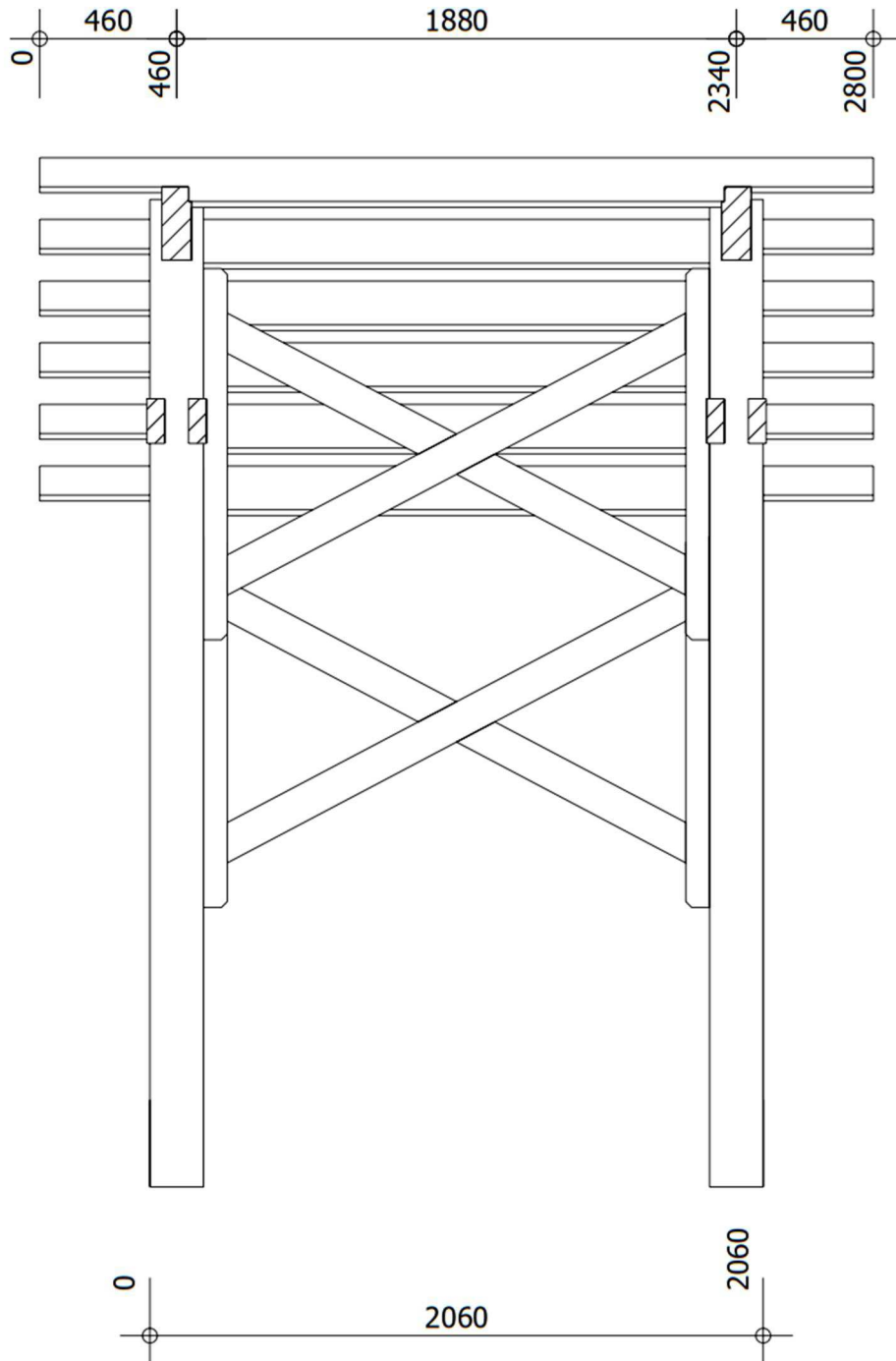


Vue éclatée

# APPENTI SUR POTEAU



# APPENTI SUR POTEAU



Élévation Croix de saint André

ECH. 1/25



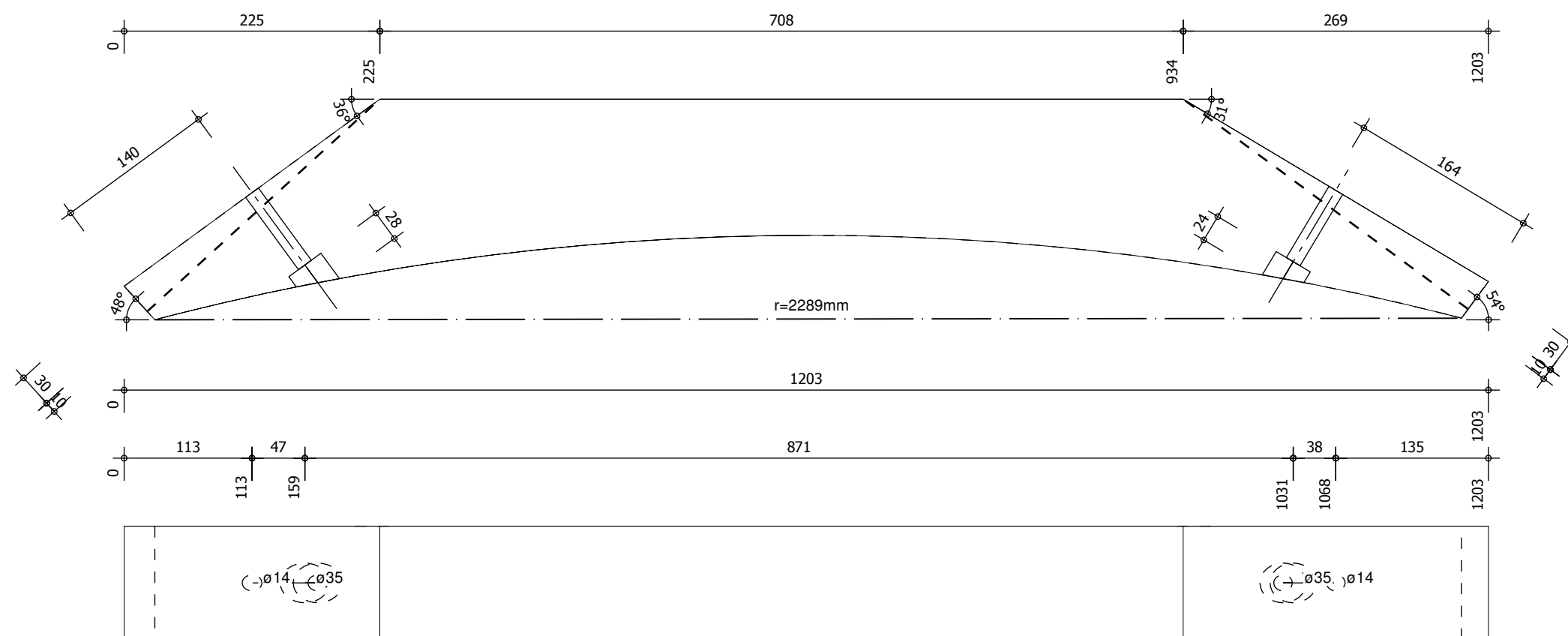
## Liste de commande scierie

largeur [mm]	retombée [mm]	longueur barre [m]	quantité [u]	longueur totale [m]	volume [m <sup>3</sup> ]

Volume Total [m<sup>3</sup>]

Poteau

Arbalétrier



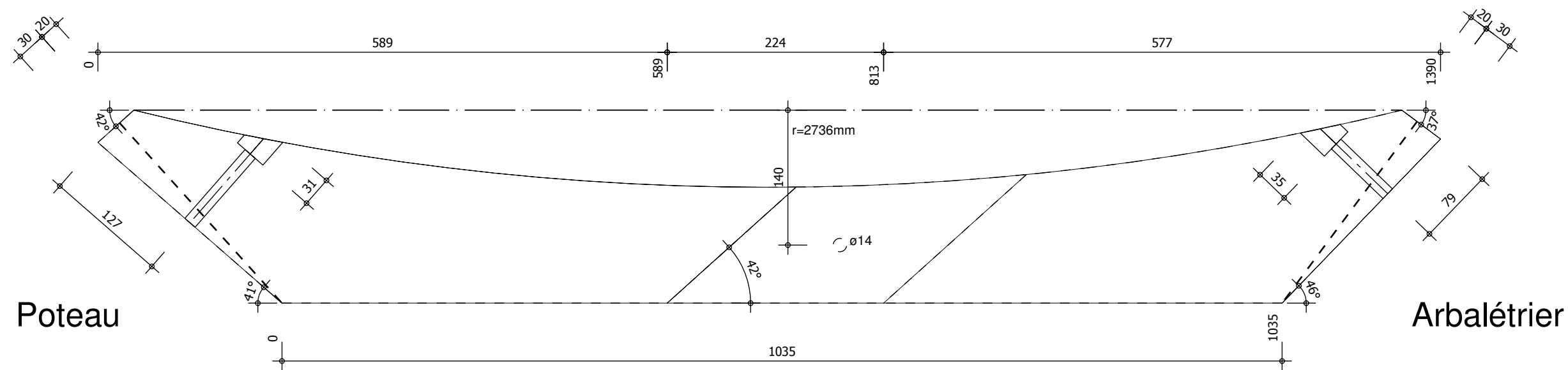
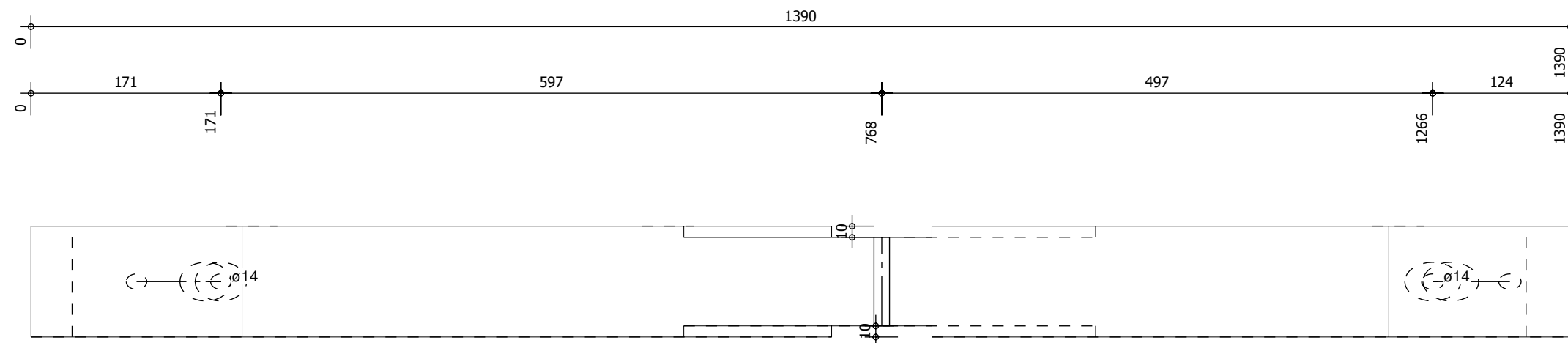
Pos  
**53**

Name: **Contrefiche basse**  
Anzahl: **2**

B/H: **100mm/200mm**  
Länge: **1203mm**  
Material: **KVH**

Datum: **11.01.2013**  
Projekt:  
Maßstab: **1:5**

Element 1/2 ferme / poteau -



Pos

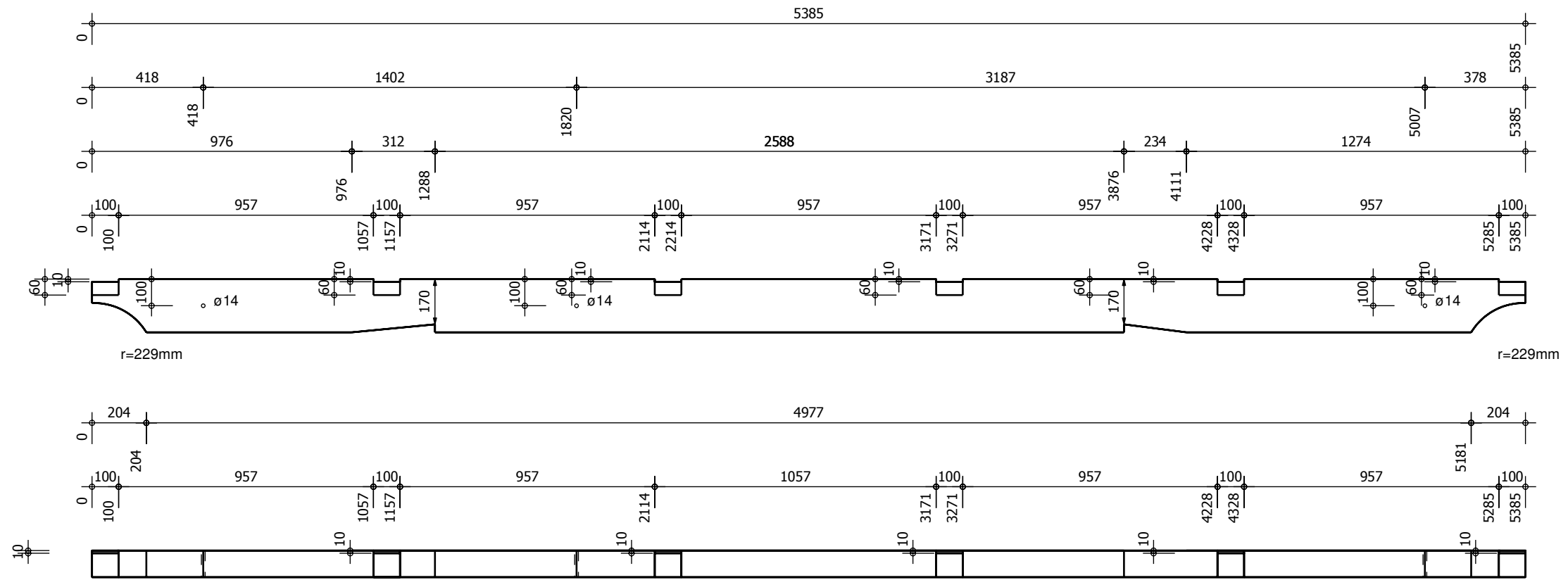
52

Name: Contrefiche haute  
Anzahl: 2

B/H: 200mm/100mm  
Länge: 1390mm  
Material: KVH

Datum: 11.01.2013  
Projekt:  
Maßstab: 1:5

, ,  
, , Element 1/2 ferme / poteau -



Pos  
50

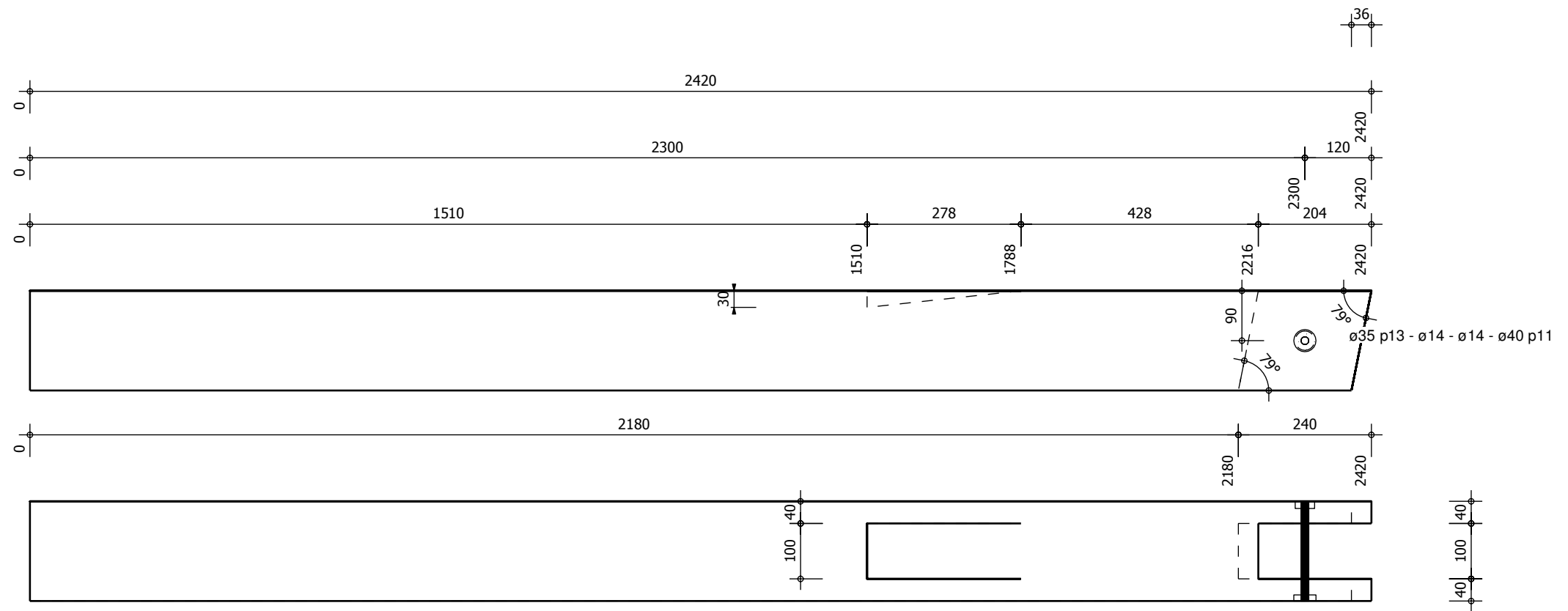
Name: Arbalétrier  
Anzahl: 2

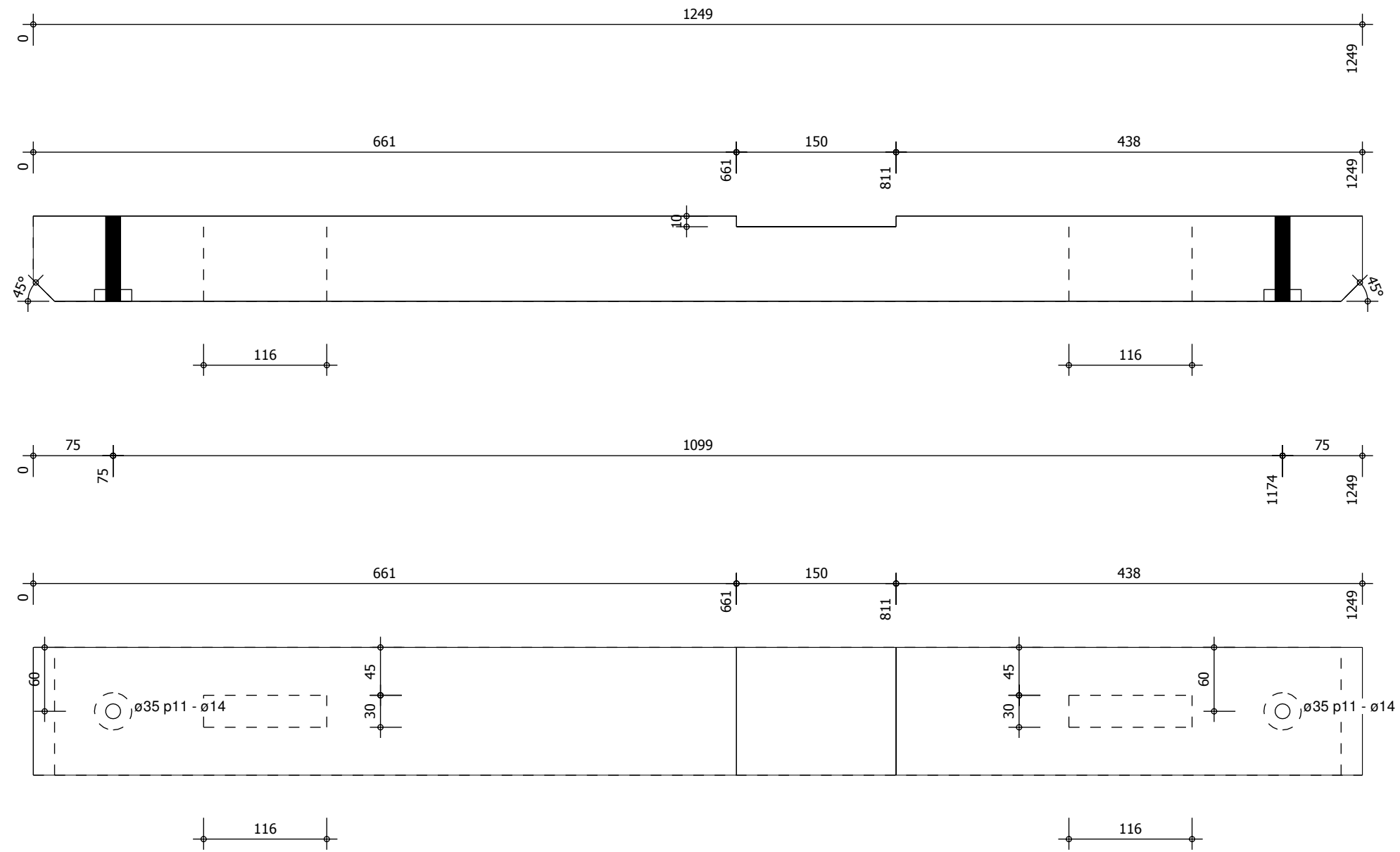
B/H: 100mm/200mm  
Länge: 5385mm  
Material: GL32

Datum: 11.01.2013  
Projekt:  
Maßstab: 1:20

, ,  
, , Element 1/2 ferme / poteau -







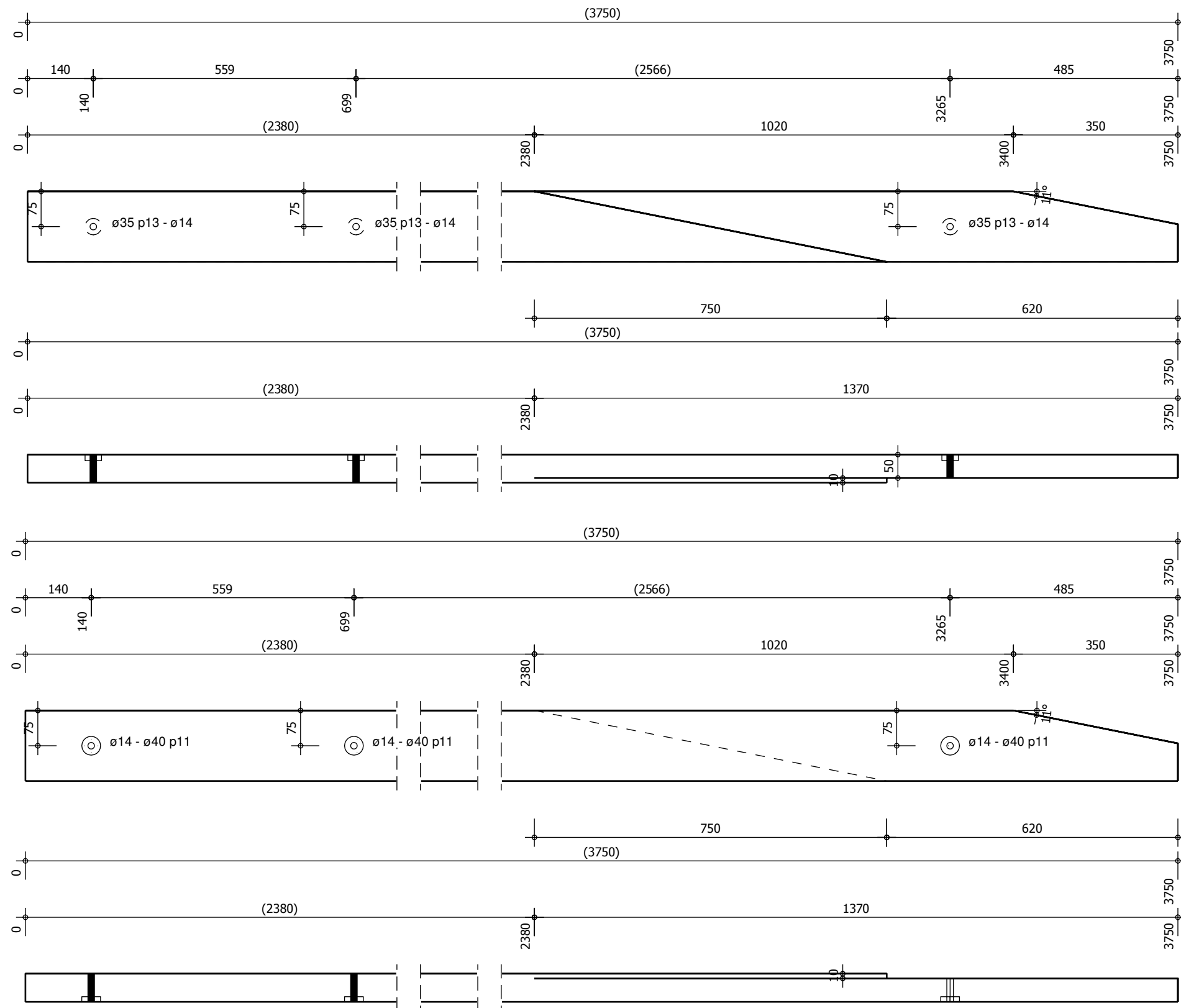
Pos  
**42**

Name: **Montant**  
Anzahl: **4**

B/H: **120mm/80mm**  
Länge: **1249mm**  
Material: **KVH**

Datum: **11.01.2013**  
Projekt:  
Maßstab: **1:5**

Element Croix de Saint André -



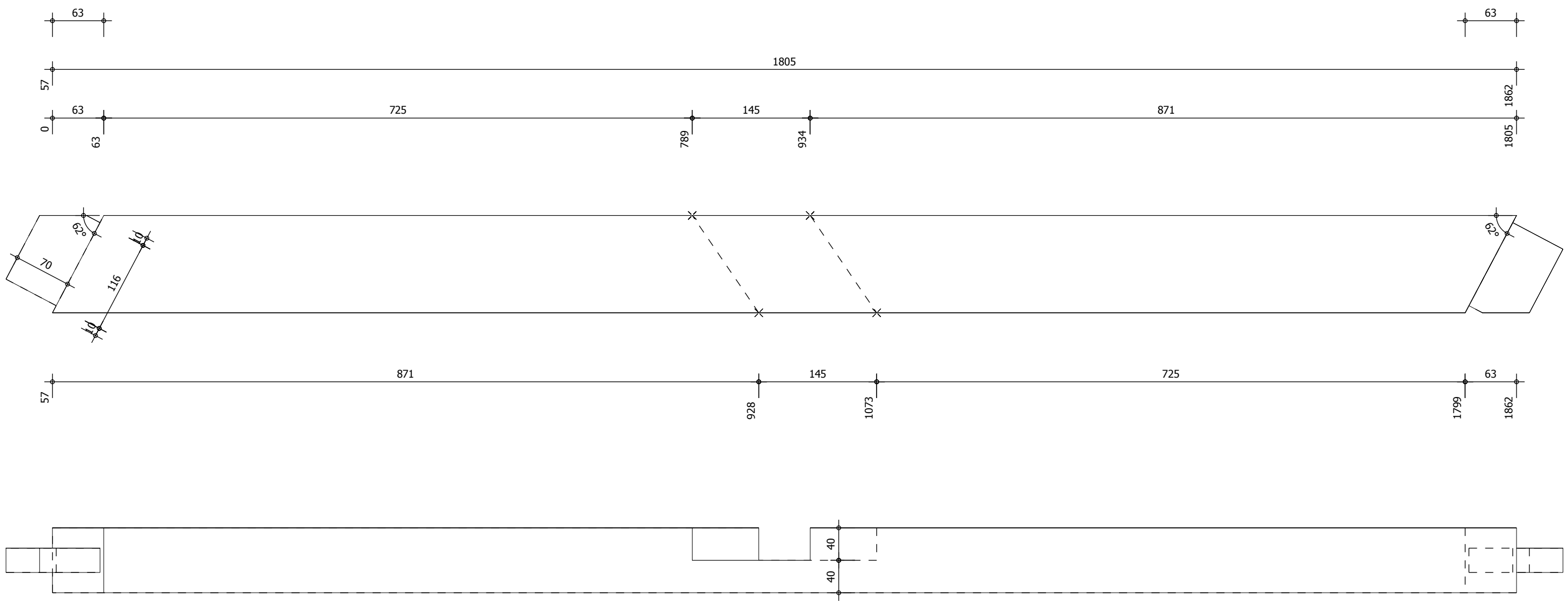
Pos  
**1**

Name: **Entrait moisé**  
Anzahl: **2**

B/H: **60mm/150mm**  
Länge: **3750mm**  
Material: **KVH**

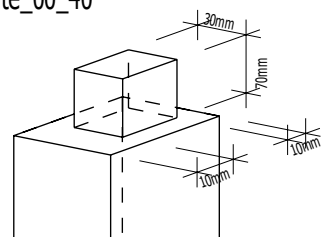
Datum: **11.01.2013**  
Projekt:  
Maßstab: **1:10**

Element 1/2 ferme / poteau -



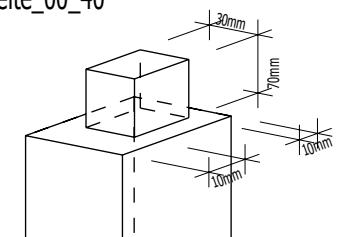
Zapfen unsymmetrisch abgesteckt

Breite\_00\_40



Zapfen unsymmetrisch abgesteckt

Breite\_00\_40



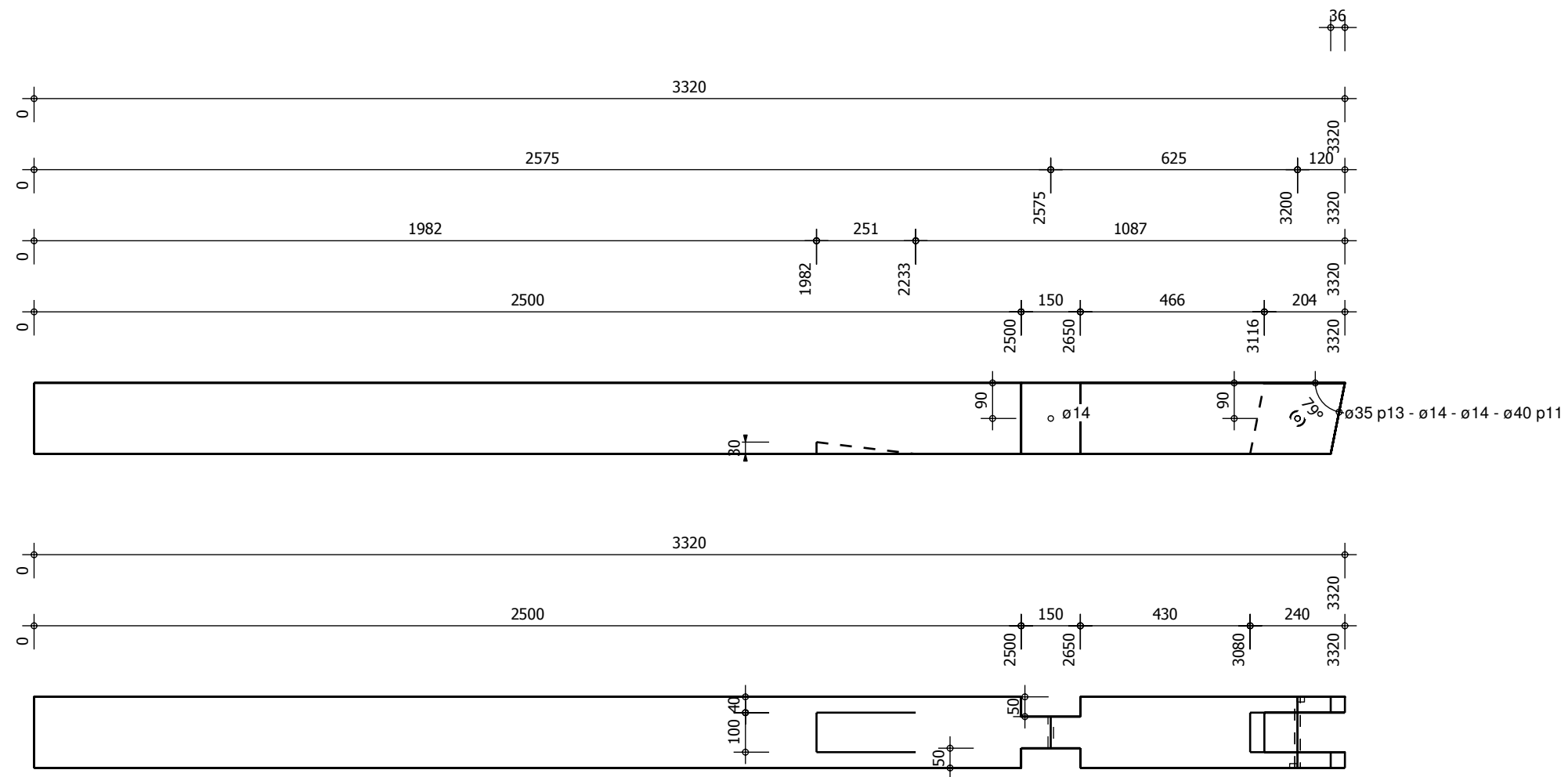
Pos  
**44**

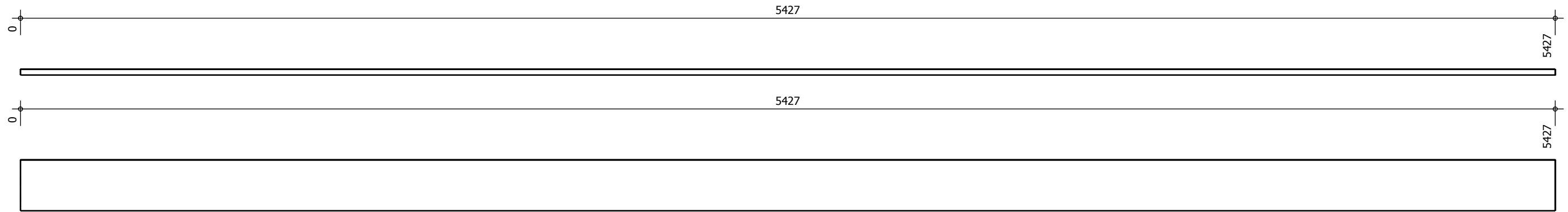
Name: **Tirant**  
Anzahl: **4**

B/H: **80mm/120mm**  
Länge: **1919mm**  
Material: **KVH**

Datum: **11.01.2013**  
Projekt:  
Maßstab: **1:5**

Element Croix de Saint André -





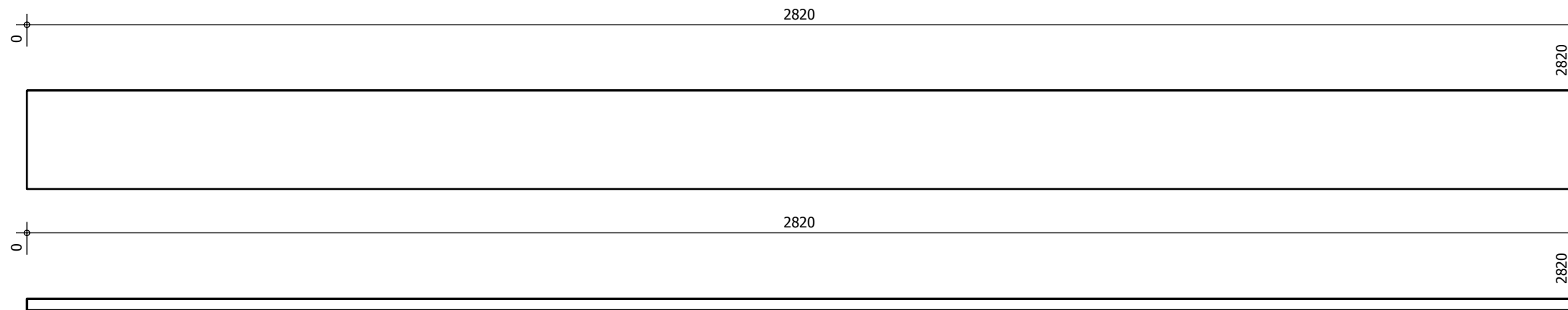
Pos  
**15**

Name: **Rive**  
Anzahl: **2**

B/H: **180mm/21mm**  
Länge: **5427mm**  
Material: **KVH**

Datum: **11.01.2013**  
Projekt:  
Maßstab: **1:15**

, ,  
, , Element Rive -





Pos  
**16**

Name: **panne**  
Anzahl: **1**

B/H: **100mm/150mm**  
Länge: **2800mm**  
Material: **KVH**

Datum: **15.01.2013**  
Projekt:  
Maßstab: **1:10**

Element -