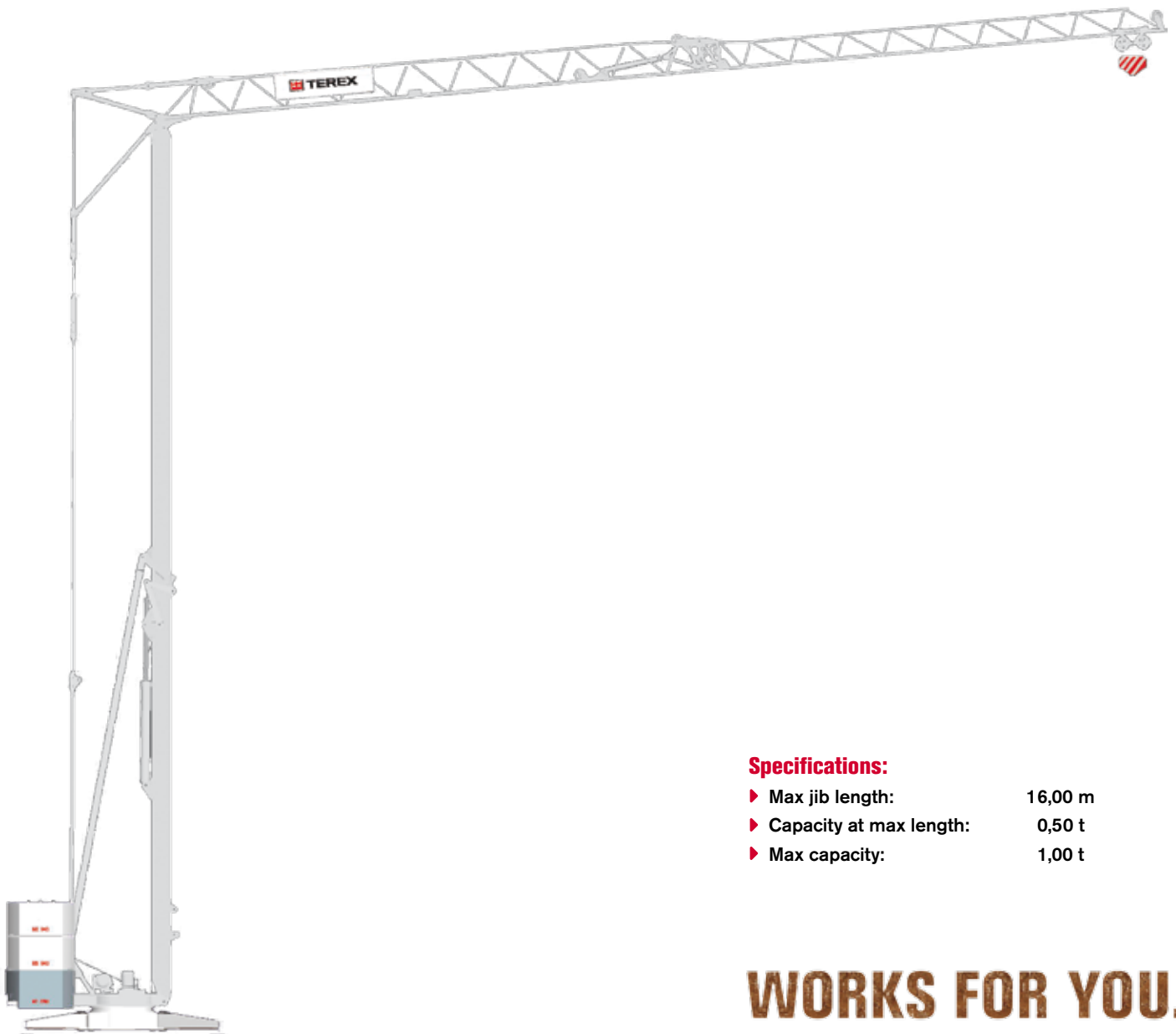


# SELF-ERECTING CRANE



**Specifications:**

- ▶ Max jib length: 16,00 m
- ▶ Capacity at max length: 0,50 t
- ▶ Max capacity: 1,00 t

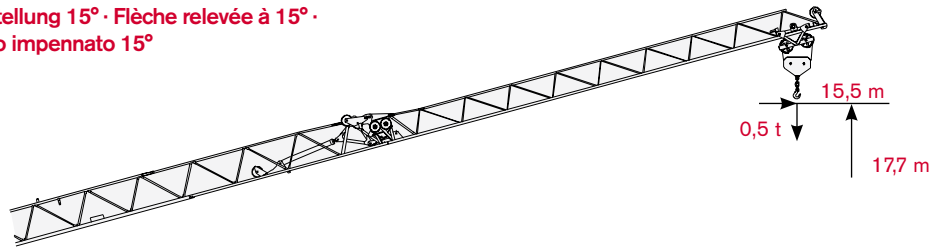
**WORKS FOR YOU.™**

# LOAD DIAGRAM

# CBR 16H

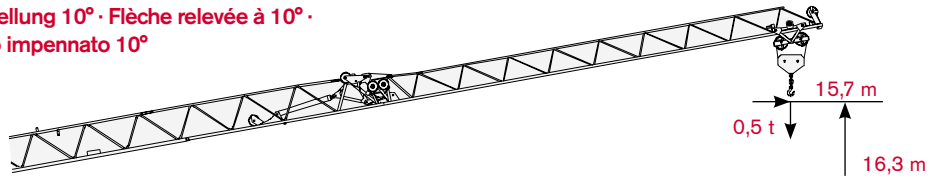
## Lastkurven · Courbes de charges · Curvas de cargas · Diagramma di portata

Raised jib 15° · Auslegersteilstellung 15° · Flèche relevée à 15° ·  
Pluma inclinada a 15° · Braccio impennato 15°



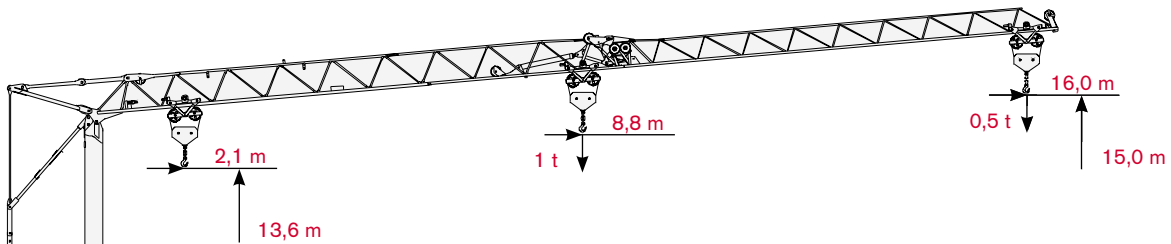
			2,10 m	4 m	6 m	8 m	10 m	12 m	14 m	15,5 m
0,50 t →	-	t	0,50	0,50	0,50	0,50	0,50	0,50	0,50	0,50

Raised jib 10° · Auslegersteilstellung 10° · Flèche relevée à 10° ·  
Pluma inclinada a 10° · Braccio impennato 10°



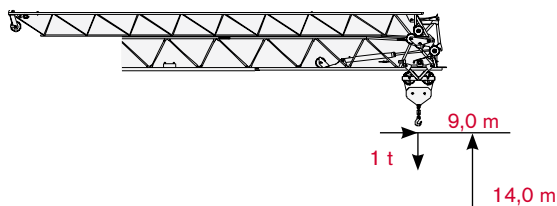
			2,10 m	4 m	6 m	8 m	10 m	12 m	14 m	15,7 m
0,50 t →	-	t	0,50	0,50	0,50	0,50	0,50	0,50	0,50	0,50

Maximum jib · Ausladung · Flèche étendu · Pluma extendida · Braccio massimo

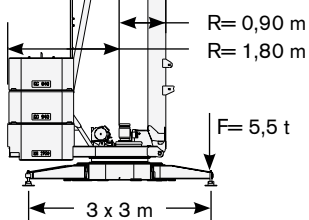


			2,10 m	4 m	6 m	8 m	10 m	12 m	14 m	16 m
1 t →	8,00 m	t	1,00	1,00	1,00	1,00	0,86	0,70	0,59	0,50

Folded jib · Ausleger eingeklappt · Flèche repliée · Pluma cerrada · Braccio ripiegato



			2,10 m	4 m	6 m	8 m	9 m			
1 t →	-	t	1,00	1,00	1,00	1,00	1,00			



# SELF-ERECTING CRANE

**Specifications:**

- ▶ Max jib length: 18,00 m
- ▶ Capacity at max length: 0,60 t
- ▶ Max capacity: 1,60 t

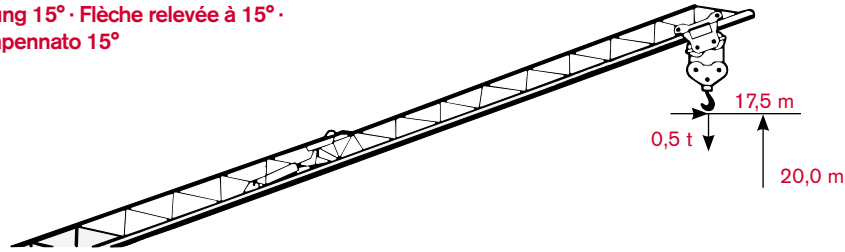
**WORKS FOR YOU.™**

# LOAD DIAGRAM

# CBR 18H-1.6 VARIANT

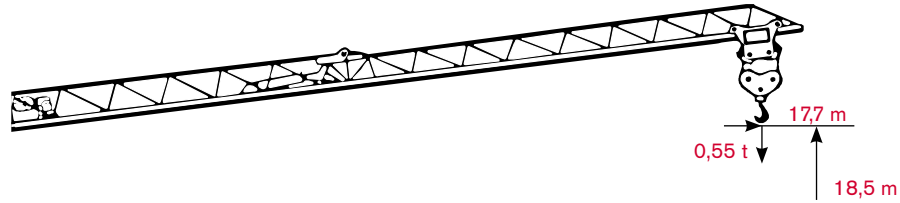
## Lastkurven · Courbes de charges · Curvas de cargas · Diagramma di portata

Raised jib 15° · Auslegersteilstellung 15° · Flèche relevée à 15° ·  
Pluma inclinada a 15° · Braccio impennato 15°



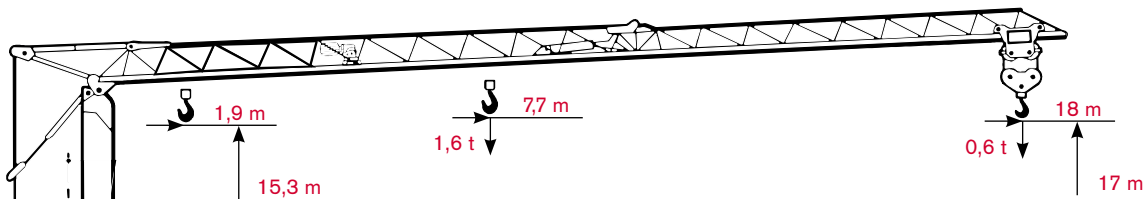
			1,9 m	4 m	6 m	8 m	10 m	12 m	14 m	16 m	17,5 m
0,5 t →	-	t	0,50	0,50	0,50	0,50	0,50	0,50	0,50	0,50	0,50

Raised jib 10° · Auslegersteilstellung 10° · Flèche relevée à 10° ·  
Pluma inclinada a 10° · Braccio impennato 10°



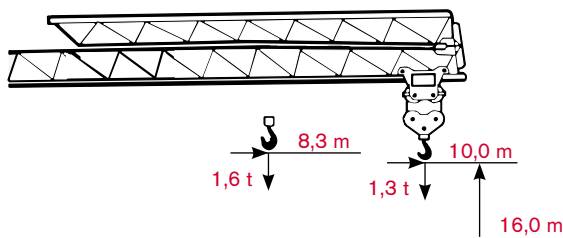
			1,9 m	4 m	6 m	8 m	10 m	12 m	14 m	16 m	17,7 m
0,55 t →	-	t	0,55	0,55	0,55	0,55	0,55	0,55	0,55	0,55	0,55

Maximum jib · Ausladung · Flèche étendu · Pluma extendida · Braccio massimo

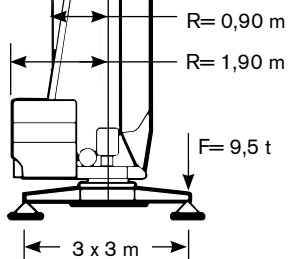


			1,9 m	4 m	6 m	8 m	10 m	12 m	14 m	16 m	18 m
1,60 t →	7,70 m	t	1,60	1,60	1,60	1,52	1,18	0,95	0,80	0,70	0,60

Folded jib · Ausleger eingeklappt · Flèche repliée · Pluma cerrada · Braccio ripiegato



			1,9 m	4 m	6 m	8 m	10 m				
1,60 t →	8,30 m	t	1,60	1,60	1,60	1,60	1,30				



# SELF-ERECTING CRANE



**Specifications:**

- ▶ Max jib length: 26,00 m
- ▶ Capacity at max length: 0,80 t
- ▶ Max capacity: 2,00 t

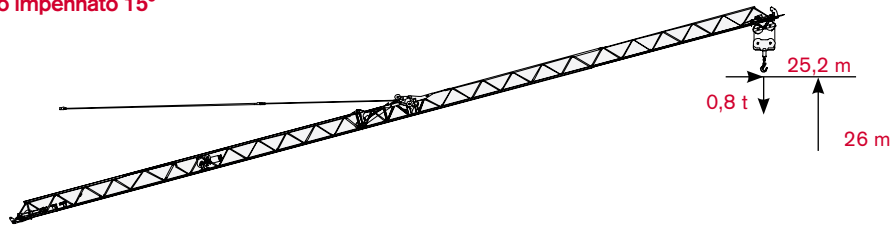
**WORKS FOR YOU.™**

# LOAD DIAGRAM

# CBR 26 PLUS

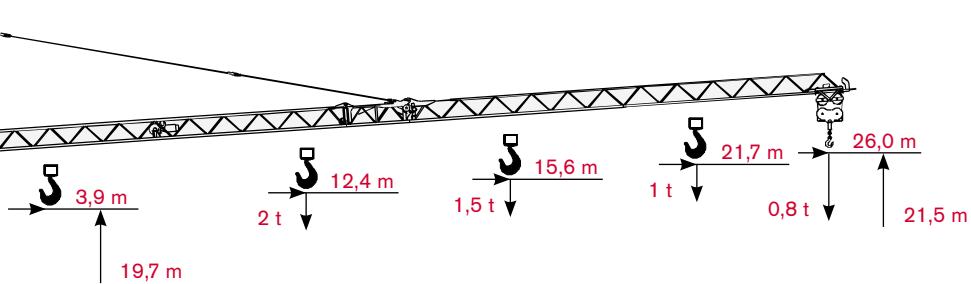
## Lastkurven · Courbes de charges · Curvas de cargas · Diagramma di portata

Raised jib 15° · Auslegersteilstellung 15° · Flèche relevée à 15° ·  
Pluma inclinada a 15° · Braccio impennato 15°



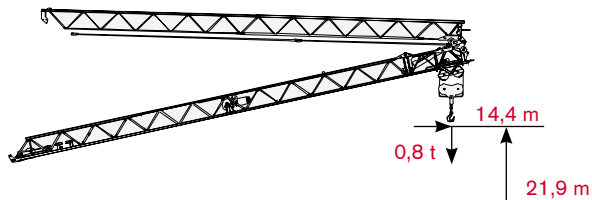
			3,9 m	6 m	8 m	10 m	12 m	14 m	16 m	18 m	20 m	22 m	24 m	25,2 m
	0,8 t	→	-	t	0,8	0,8	0,8	0,8	0,8	0,8	0,8	0,8	0,8	0,8

Maximum jib · Ausladung · Flèche étendu · Pluma extendida · Braccio massimo



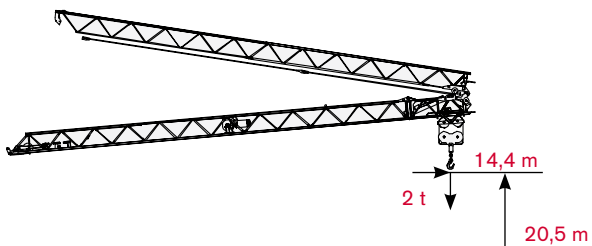
			3,9 m	6 m	8 m	10 m	12 m	14 m	16 m	18 m	20 m	22 m	24 m	26 m
	2,0 t	→	12,43 m	t	2,0	2,0	2,0	2,0	2,0	1,72	1,46	1,26	1,11	0,99
														0,89
														0,80

Folded and raised jib · Ausleger eingeklappt in Steilstellung · Flèche repliée et relevée · Pluma inclinada y cerrada ·  
Braccio ripiegato impennato

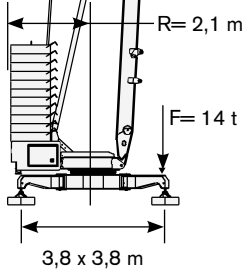


			3,9 m	6 m	8 m	10 m	12 m	14,4 m						
	0,8 t	→	-	t	0,8	0,8	0,8	0,8	0,8	0,8				

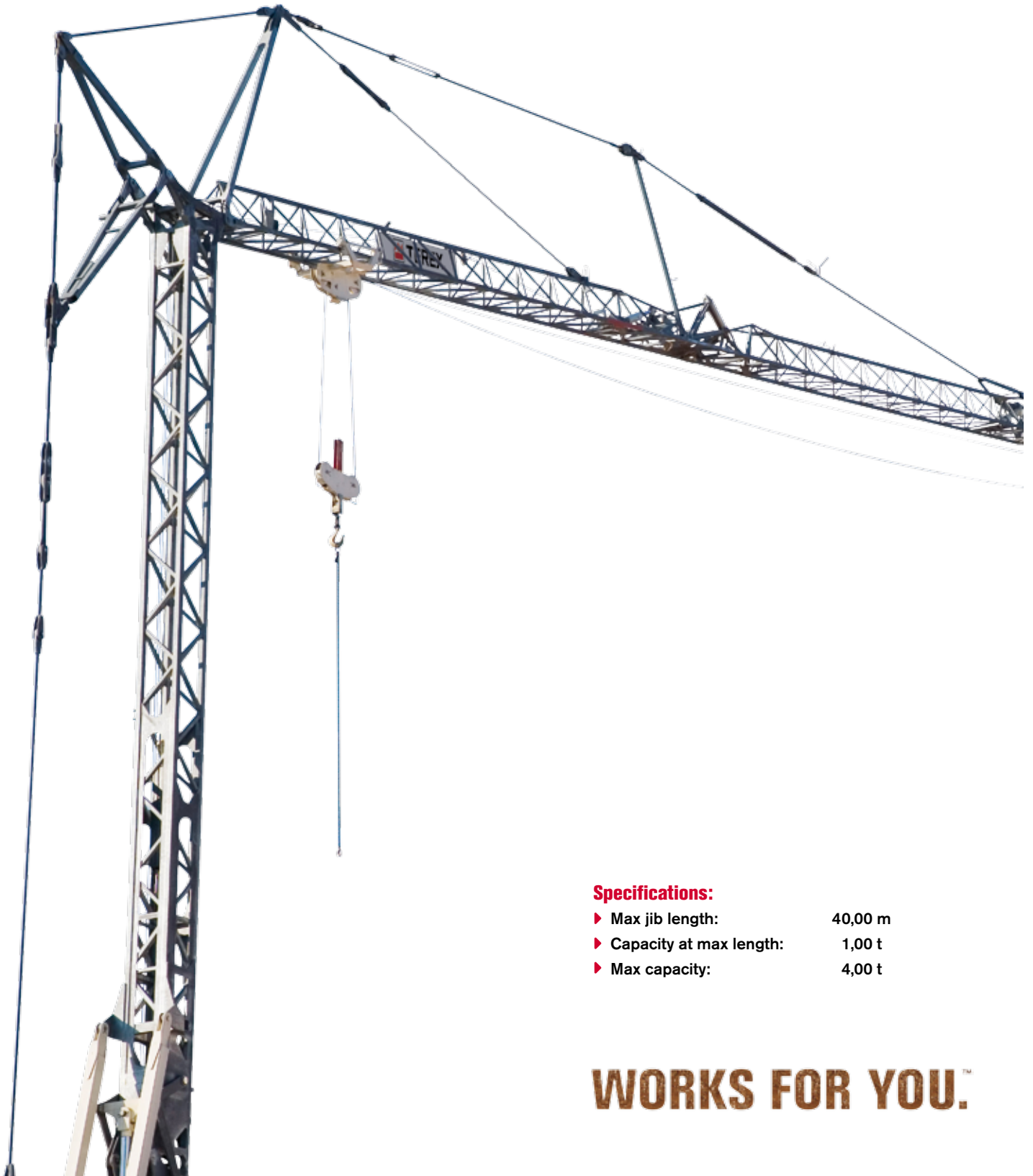
Folded jib · Ausleger eingeklappt · Flèche repliée · Pluma cerrada · Braccio ripiegato



			3,9 m	6 m	8 m	10 m	12 m	14,4 m						
	2,0 t	→	-	t	2,0	2,0	2,0	2,0	2,0	2,0				



# SELF-ERECTING CRANE

**Specifications:**

- ▶ Max jib length: 40,00 m
- ▶ Capacity at max length: 1,00 t
- ▶ Max capacity: 4,00 t

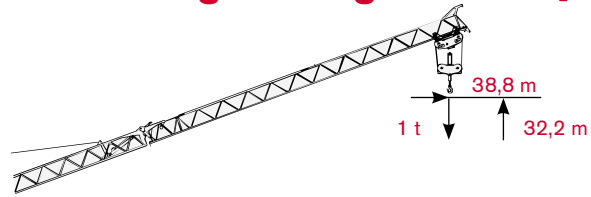
**WORKS FOR YOU.™**

# LOAD DIAGRAM

# CBR 40H

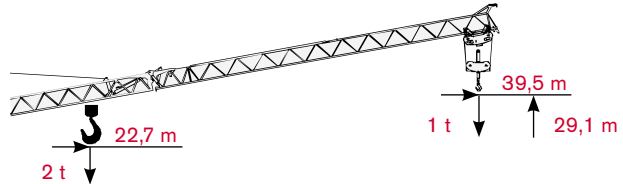
## Lastkurven · Courbes de charges · Curvas de cargas · Diagramma di portata

Raised jib 15° · Auslegersteilstellung 15° · Flèche relevée à 15° · Pluma inclinada a 15° · Braccio impennato 15°



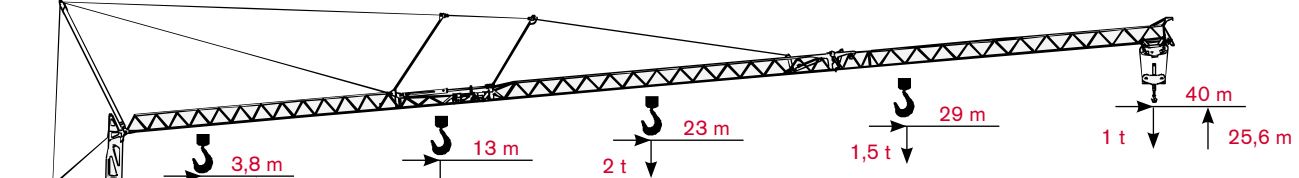
			3,80 m	8 m	12 m	16 m	20 m	24 m	28 m	32 m	36 m	38,80 m
	1,0 t →	-	t 1,00	1,00	1,00	1,00	1,00	1,00	1,00	1,00	1,00	1,00

Raised jib 10° · Auslegersteilstellung 10° · Flèche relevée à 10° · Pluma inclinada a 10° · Braccio impennato 10°



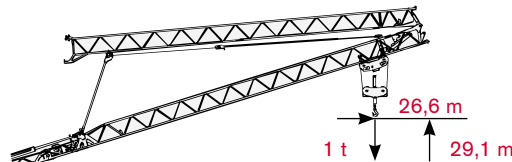
			3,80 m	8 m	12 m	16 m	20 m	24 m	28 m	32 m	36 m	39,50 m
	2,0 t →	22,70 m	t 2,00	2,00	2,00	2,00	2,00	1,87	1,55	1,31	1,13	1,00

Maximum jib · Ausladung · Flèche étendu · Pluma extendida · Braccio massimo



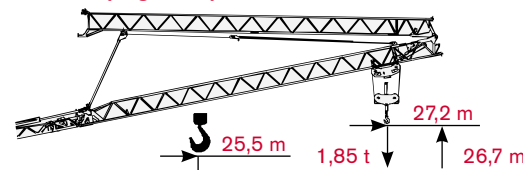
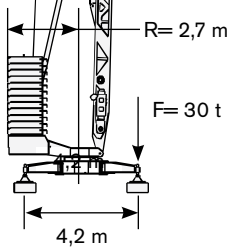
			3,80 m	8 m	12 m	16 m	20 m	24 m	28 m	32 m	36 m	40 m
	4,0 t →	13,00 m	t 4,00	4,00	4,00	3,18	2,40	1,89	1,57	1,37	1,20	1,00

Folded and raised jib 15° · Ausleger eingeklappt in Steilstellung 15° · Flèche repliée et relevée a 15° · Pluma inclinada y cerrada a 15° · Braccio ripiegato impennato 15°



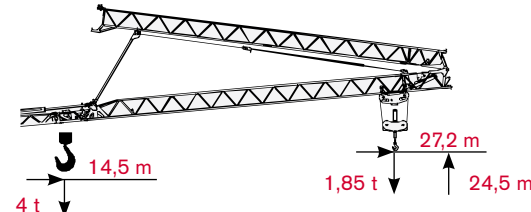
			3,80 m	8 m	12 m	16 m	20 m	24 m	26,60 m
	1,0 t →	-	t 1,00	1,00	1,00	1,00	1,00	1,00	1,00

Folded and raised jib 10° · Ausleger eingeklappt in Steilstellung 10° · Flèche repliée et relevée a 10° · Pluma inclinada y cerrada a 10° · Braccio ripiegato impennato 10



			3,80 m	8 m	12 m	16 m	20 m	24 m	27,20 m
	2,0 t →	22,50 m	t 2,00	2,00	2,00	2,00	2,00	2,00	1,85

Folded jib · Ausleger eingeklappt · Flèche repliée · Pluma cerrada · Braccio ripiegato



			3,80 m	8 m	12 m	16 m	20 m	24 m	27,20 m
	4,0 t →	14,50 m	t 4,00	4,00	4,00	3,56	2,71	2,18	1,85